
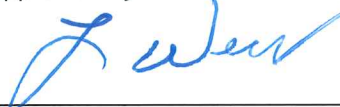
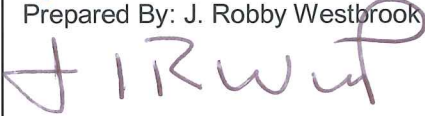


Hazard Specific Annex

WINTER STORM



**Emergency Operations Center
CHEROKEE COUNTY, GEORGIA
5-4
Local Emergency Operations Plan Annex**

	5-4 WINTER STORM	
	Approved By: Chief West 	Appendix 1: Risk Communications Appendix 2: Protective Measures
Effective Date 12-15-2011	Prepared By: J. Robby Westbrook 	

REFERENCES:

- EMAP Standard
- NIMS (2008)
- National Response Framework
- Cherokee County City-County Ordinance Related to Emergency Management
- Cherokee County Local Emergency Operations Plan

A. Purpose: (EMAP 4.6.2.1)

The purpose of this SOP is to establish the policy and procedures for the response to and recovery from Winter Storms.

B. Scope: (EMAP 4.6.2.1)

This SOP covers all preparedness, response and recovery operations related to a winter storm.

C. Objectives (EMAP 4.6.2.1)

1. Ensure that a high level of situational awareness is maintained during all phases of any winter weather situation.
2. Ensure that communications across the entire emergency management program are maintained before, during and after a winter storm.
3. Ensure a coordinated approach to clearing streets of snow, ice and debris generated by a winter storm in accordance with jurisdictional street priority lists.

4. Ensure that a coordinated effort using all available resources is used to prioritize and clear access routes to critical facilities of snow, ice and other debris. This includes fire stations, E-911 Center, Adult Detention Center, critical government facilities as identified by each jurisdiction and other facilities essential for maintaining the public's safety and continuity of essential services.
5. Ensure that emergency services are maintained throughout all phases of a winter storm event.
6. Ensure that all expenses related to preparedness, response and recovery for each winter storm episode are documented for potential reimbursement.

D. Authority (EMAP 4.6.2.2)

1. The Cherokee County Joint City-County Resolution Related to Emergency Management (2008).
2. The Georgia Emergency Management Act of 1981, as amended.

E. Definitions

Awareness Message	<i>Issued to all stakeholders by the Division of Emergency Management to provide information that does not meet the criteria of a watch/warning message, or full situation report. This may include closing information, special weather statements, and/or winter weather advisories.</i>
Blizzard Warning	<i>Issued for winter storms with sustained or frequent winds of 35 mph or higher with considerable falling and/or blowing snow that frequently reduces visibility to 1/4 of a mile or less. These conditions are expected to prevail for a minimum of 3 hours.</i>
Ice Storm Warning	<i>This product is issued by the National Weather Service when freezing rain produces a significant and possibly damaging accumulation of ice. The criteria for this warning varies from state to state, but typically will be issued any time more than 1/4" of ice is expected to accumulate in an area.</i>
Executive Briefing	<i>Provided to elected officials, agency/department heads and division commanders by the Cherokee Sheriff's Office Division of Emergency Management. Executive briefings may be delivered in person, via e-mail, conference calls, video conferencing or a combination of all these methods.</i>

Situation Reports	<i>Provided to all stakeholders by the Cherokee Sheriff's Office Division of Emergency Management. Situation Reports are very detailed reports of all activities within a specified EOC operational period and may also include anticipated future actions, current situation and other critical information. Situation Reports are typically issued every 12 or 24 hours.</i>
Winter Storm Watch	<i>This product is issued by the National Weather Service when there is a potential for heavy snow or significant ice accumulations, usually at least 24 to 36 hours in advance. The criteria for this watch can vary from place to place.</i>
Winter Storm Warning	<i>This product is issued by the National Weather Service when a winter storm is producing or is forecast to produce heavy snow or significant ice accumulations. The criteria for this warning can vary from place to place.</i>
Winter Weather Advisory	<i>This product is issued by the National Weather Service when a low pressure system produces a combination of winter weather (snow, freezing rain, sleet, etc.) that present a hazard, but does not meet warning criteria.</i>

F. Situation & Assumptions ([EMAP 4.6.2.3](#))

1. Winter storms have affected Cherokee County many times over the past 20 years. These winter storms have ranged in severity from minor to major. Snow, freezing rain, sleet, severe cold and strong winds have resulted in a variety of impacts including hazardous driving conditions, power outages, storm generated debris which damages structures, blocks roads and damages critical infrastructure.
2. Severe winter storms can dramatically hinder the ability of public safety resources to respond to calls for service.
3. Snow and ice accumulations along with downed trees and power lines can impede the ability of citizens to reach critical infrastructure such as hospitals and doctors offices as well as special care facilities and drug stores.
4. Snow and ice accumulations along with downed trees and power lines can prevent critical services from reaching citizens who require resources such as home health care and Meals on Wheels.



5. Extended power outages coupled with below freezing temperatures will likely force citizens with no back up heating source to seek shelter.

G. Functional Roles & Responsibilities (EMAP 4.6.2.4, 4.7.5)

1. Public Streets & Critical Facility

Agency/Department	Priorities
Cherokee County Roads & Bridges	<ol style="list-style-type: none"> 1. E-911 Center/Adult Detention Center Drives 2. Assist City of Canton clearing Hospital Drive if requested 3. Assist Public Safety response as requested 4. Clear streets following jurisdictional priority list
Cherokee County Parks & Rec	<ol style="list-style-type: none"> 1. Clear County Fire Station/Sheriff Precinct Drives 2. Assist Public Safety response as requested 3. Clear Justice Center Drive & Parking Areas 4. Clear Bluffs parking area 5. Clear other county facility drives as assigned
Cherokee County Property Management	<ol style="list-style-type: none"> 1. Treat or clear sidewalks at Justice Center 2. Treat or clear sidewalks at Bluffs 3. Treat or clear sidewalks at other county facilities
City of Ball Ground Streets Department	<ol style="list-style-type: none"> 1. Assist Public Safety response as requested 2. Clear routes to critical facilities within jurisdiction 3. Clear streets following jurisdictional priority list
City of Canton Streets Department	<ol style="list-style-type: none"> 1. Clear/treat access to Hospital 2. Assist Public Safety response as requested 3. Clear routes to critical facilities within jurisdiction 4. Clear streets following jurisdictional priority list
City of Holly Springs Streets Department	<ol style="list-style-type: none"> 1. Assist Public Safety response as requested 2. Clear routes to critical facilities within jurisdiction 3. Clear streets following jurisdictional priority list
City of Woodstock Streets Department	<ol style="list-style-type: none"> 1. Assist Public Safety response as requested 2. Clear routes to critical facilities within jurisdiction 3. Clear streets following jurisdictional priority list

2. Overall Agency/Department Responsibilities by Emergency Support Function

G.2.a WINTER STORM Emergency Support Function 1: Transportation					
Cherokee County School District Cherokee Area Transportation System					
Functional Objectives: <ul style="list-style-type: none"> ○ Accelerate preparedness and mitigation measures. ○ Increase readiness to respond as requested. ○ Implement emergency protective and mitigation actions for department personnel & assets. ○ Initiate emergency response actions. 					
<input checked="" type="checkbox"/>	Tasks	Pre-Event	Response	Recovery	
	Review internal plans related to severe winter weather.	X			
	Maintain high level of situational awareness among staff members.	X	X	X	
	Encourage all employees to review their home emergency preparation plans, supplies, and family notification systems.	X			
	Participate in emergency management briefings and planning meetings.	X	X	X	
	Check communications systems including cellular phones and two-way radios.	X			
	Develop internal staffing plans based on emergency management briefings and implement as needed.	X			
	Review departmental safety plans.	X			
	Notify public of changes in system schedules through the Emergency Operations Center Joint Information Team (ESF-15).	X	X	X	
	Provide staffing to Emergency Operations Center.	X	X	X	
	Ensure buses are prepared for deployment including full fuel tanks.	X	X	X	
	Respond to incident location or staging areas as requested by the Emergency Operations Center and report to on-scene incident commanders.	X	X	X	
	Provide safe transportation of victims, responders or volunteers as needed.	X	X	X	
	Restock and replace emergency supplies as needed.	X	X	X	
	Track all costs associated with the emergency response for future reimbursement.	X	X	X	
	Participate in after action activities.			X	
	Restock & Prepare for next activation.			X	

G.2.b WINTER STORM

Emergency Support Function 2: Communications & Warning

**Cherokee County E-911 Center
Cherokee Sheriff's Office Division of Emergency Management
Cherokee Amateur Radio Group**



Functional Objectives:

- Accelerate preparedness and mitigation measures.
- Increase readiness to respond to threat.
- Implement emergency protective and mitigation actions for department personnel & assets.
- Initiate emergency communications actions.

<input checked="" type="checkbox"/>	Tasks	Pre-Event	Response	Recovery
	Review policies related to winter storm operations.	X		
	Complete Checklists & Test critical communications equipment.	X		
	Develop staffing plans based on threat.	X		
	Participate in briefings related to threat.	X		
	Encourage all employees to review their home emergency plans, supplies, and family notification systems.	X		
	Evaluate inventory levels of all critical supplies.	X	X	X
	Respond to calls for service and deliver services found within the department's/Division's core competencies for communications & warning using existing policy.		X	X
	Maintain high level of situational awareness.	X	X	X
	Amateur radio group will provide real-time situational awareness to EOC.	X	X	X
	Implement back up communications & warning systems as needed due to primary system failure.	X	X	X
	Implement staffing plans in E-911 Center and EOC as needed.	X	X	X
	Provide public warnings in a timely and accurate manner.	X	X	X
	Report all costs related to storm operations to the Emergency Operations Center Finance Section.			X
	Participate in After Action activities.			X
	Restock & Prepare for next activation.			X

G.2.c WINTER STORM

Emergency Support Function 3: Public Works

EOC Critical Infrastructure Branch



**Cherokee County Roads & Bridges
Cherokee County Engineering
Cherokee County Parks & Recreation Agency
City Public Works/Street Departments**

Functional Objectives:

- o Accelerate preparedness and mitigation measures.
- o Increase readiness to respond as requested.
- o Implement emergency protective and mitigation actions for department personnel & assets.
- o Initiate emergency response actions.

☑	<i>Tasks</i>	<i>Pre-Event</i>	<i>Response</i>	<i>Recovery</i>
	Review internal plans related to severe winter weather.	X		
	Maintain high level of situational awareness among staff members.	X	X	X
	Encourage all employees to review their home emergency plans, supplies, and family notification systems.	X		
	Participate in emergency management briefings and planning meetings.	X	X	X
	Evaluate inventory levels of all critical supplies.	X		
	Check communications systems including cellular phones and two-way radios.	X		
	Evaluate readiness of all equipment.	X		
	Develop internal staffing plans based on potential impacts.	X		
	Review departmental safety plans.	X	X	X
	Provide Staffing to EOC.	X	X	X
	Pre-Deploy Equipment if indicated.	X		
	Support emergency services response as requested.		X	X
	Clear critical infrastructure routes and streets following defined jurisdictional priority lists.		X	X
	Complete damage assessment for transportation infrastructure including estimation of debris yardage in need of removal.		X	X
	Request mutual aid as needed through the Emergency Operations Center.	X	X	X
	Report all costs related to storm operations to the Emergency Operations Center Finance Section.			X
	Implement Demobilization Plan.			X
	Participate in After Action activities.			X
	Restock & Prepare for next activation.			X

G.2.d WINTER STORM

Emergency Support Function 4: Firefighting/Emergency Medical Service
EOC-Emergency Service Branch

Cherokee County Fire-ES
Canton Fire Department
Woodstock Fire Rescue



Functional Objectives:

- o Acceleration of preparedness and mitigation measures.
- o Increase readiness to respond.
- o Implement emergency protective and mitigation actions.
- o Initiate emergency response actions.

<input checked="" type="checkbox"/>	Tasks	Pre-Event	Response	Recovery
	Attend briefings and other planning meetings related to the potential threat.	X		
	Deploy ice melt, snow chains and other supplies to fire stations.	X		
	Encourage all employees to review their home emergency preparation plans, supplies, and family notification systems.	X		
	Ensure that materials and equipment needed to support winter storm operations are obtained and ready for deployment.	X		
	Consider development of special staffing plans based on the latest situational awareness and/or forecasts and implement as needed.	X	X	X
	Consider deployment of staff 4x4 vehicles to field operations for quick response BLS units.	X	X	X
	Provide staffing to EOC when activated.	X	X	X
	Respond to calls for service and deliver services found within the department's core competencies for firefighting as assigned by the local emergency operations plan.	X	X	X
	Provide first response emergency medical services following established departmental procedures and core competencies related to emergency medical service.	X	X	X
	Provide transportation of the sick and injured as well as special needs victims affected by the disaster following established departmental procedures.	X	X	X
	Activate mutual aid agreements as needed.	X	X	X
	Consider implementation of open line dispatching.	X	X	X
	Consider deployment of personnel to the E-911 Center to coordinate the movement of Fire-ES resources.	X	X	X
	Establish single point resource ordering between field commands and the Emergency Operations Center if Activated.	X	X	X
	Report all costs related to storm operations to the Emergency Operations Center Finance Section.			X
	Implement Demobilization Plan.			X
	Participate in After Action activities.			X

Emergency Support Function 5: Emergency Management



Cherokee Sheriff's Office Division of Emergency Management

Functional Objectives

- Ensure multi-agency coordination throughout all phases of the event.
- Provide risk communications throughout the event.
- Ensure activation and operation of the Emergency Operations Center.
- Oversee resource management system throughout the event.
- Provide real time decision support to all stakeholders.
- Coordinate recovery activities.

<input checked="" type="checkbox"/>	<i>Tasks</i>	Pre-Event	Response	Recovery
	Ensure EOC Readiness	X		
	Review Plans	X		
	Complete Checklists & Test critical communications equipment.	X		
	Provide situational awareness messages to all stakeholders	X	X	X
	Encourage all employees to review their home emergency preparation plans, supplies, and family notification systems.	X		
	Organize & lead briefings with all stakeholders.	X	X	X
	Provide preparedness information to the public.	X		
	Provide emergency protective measures to the public specific to threat.	X	X	
	Maintain a stream of public information including response and recovery actions.		X	X
	Coordinate with ARES group	X	X	X
	Determine EOC Activation levels and EOC staffing requirements.	X	X	X
	Alert all stakeholders of potential EOC Activation	X		
	Provide multi-agency coordination following divisional core competencies.	X	X	X
	Provide coordination between the County EOC and state multi-agency coordination points.	X	X	X
	Ensure EOC support services are maintained.	X	X	X
	Provide situation reports as required.	X	X	X
	Maintain WebEOC/S.A.G.E during all phases of the event.	X	X	X
	Coordinate Joint Information Center operations	X	X	X
	Ensure advanced planning for EOC operations is completed in relation to current & future EOC objectives.	X	X	X
	Ensure short & long-term recovery phases are implemented as required.		X	X
	Demobilize EOC as needed.			
	Coordinate after action activities.			X

G.2.f WINTER STORM

Emergency Support Function 6: Mass Care

**Department of Family & Children’s Services
 American Red Cross
 Georgia Department of Community Health
 Cherokee Sheriff’s Office Division of Emergency Management**



Functional Objectives:

- Acceleration of preparedness and mitigation measures.
- Increase readiness to respond.
- Implement emergency protective and mitigation actions.
- Initiate emergency response actions.
- Prepare for Recovery Operations

<input checked="" type="checkbox"/>	<i>Tasks</i>	Pre-Event	Response	Recovery
	Review Plans	X		
	Complete Checklists & Test critical communications equipment.	X		
	Alert staff of possible EOC activation	X		
	Develop EOC staffing plans.	X		
	Maintain high level of situational awareness.	X	X	X
	Participate in briefings.	X	X	X
	Encourage all employees to review their home emergency preparation plans, supplies, and family notification systems.	X		
	Provide mass care support and services in accordance with agency core competencies, policies and memorandums of understanding.	X	X	X
	Coordinate with all other EOC positions related to mass care operations.	X	X	X
	Establish single point resource ordering between mass care facilities in the field and the Emergency Operations Center ESF-6.	X	X	X
	Participate in recovery briefings and planning.		X	X
	Provide EOC leadership with information relative to mass care for advanced planning.		X	X
	Demobilize as situation warrants.			X
	Participate in After Action activities.			X
	Restock & Prepare for next activation.			X

G.2.g WINTER STORM

Emergency Support Function 8: Health & Medical

**Georgia Department of Community Health
Cherokee Sheriff's Office Division of Emergency Management**



Functional Objectives:

- Acceleration of preparedness and mitigation measures.
- Increase readiness to respond.
- Implement emergency protective and mitigation actions.
- Initiate emergency response actions.
- Prepare for Recovery Operations

<input checked="" type="checkbox"/>	<i>Tasks</i>	Pre-Event	Response	Recovery
	Review Plans	X		
	Complete Checklists & Test critical communications equipment.	X		
	Alert staff of possible EOC activation	X		
	Develop EOC staffing plans.	X		
	Maintain high level of situational awareness.	X	X	X
	Participate in briefings.	X	X	X
	Encourage all employees to review their home emergency preparation plans, supplies, and family notification systems.	X		
	Coordinate with District Health EOC, community health partners and others to ensure public health readiness.	X		
	Provide public health/mass care support and services in accordance with agency core competencies, policies and memorandums of understanding.	X	X	X
	Coordinate with all other EOC positions related to mass care operations.	X	X	X
	Establish single point resource ordering between public health/mass care facilities established in the field and the Emergency Operations Center ESF-6 & ESF -8.	X	X	X
	Participate in recovery briefings and planning.		X	X
	Provide EOC leadership with information relative to public health/mass care operations for advanced planning.		X	X
	Demobilize as situation warrants.			X
	Participate in After Action activities.			X
	Restock & Prepare for next activation.			X

G.2.h WINTER STORM

Emergency Support Function 9: Search & Rescue

**Cherokee County Fire-ES
Canton Fire Department
Woodstock Fire Rescue**



Functional Objectives:

- Acceleration of preparedness and mitigation measures.
- Increase readiness to respond.
- Implement emergency protective and mitigation actions.
- Initiate emergency response actions.

<input checked="" type="checkbox"/>	<i>Tasks</i>	Pre-Event	Response	Recovery
	Review Plans.	X		
	Complete Checklists & Test critical communications equipment.	X		
	Alert staff/volunteers of possible EOC activation.	X		
	Ensure that materials and equipment needed to support winter storm operations are obtained and ready for deployment.	X		
	Consider development of special staffing plans based on the latest situational awareness and/or forecasts and implement as needed.	X	X	X
	Consider deployment of staff 4x4 vehicles to field operations.	X	X	X
	Provide staffing to EOC when activated.	X	X	X
	Respond to calls for service and deliver services found within the department's core competencies for Search & Rescue as assigned.	X	X	X
	Maintain high level of situational awareness.	X	X	X
	Participate in briefings.	X	X	X
	Encourage all SAR volunteers to review their home emergency preparation plans, supplies, and family notification systems.	X		
	Activate mutual aid agreements as needed.	X	X	X
	Provide EOC leadership with information relative to SAR operations for advanced planning.	X	X	X
	Demobilize as situation allows.		X	X
	Report all costs related to storm operations to the Emergency Operations Center Finance Section.			X
	Implement Demobilization Plan.			X
	Participate in After Action activities.			X
	Restock & Prepare for next activation.			X

G.12.i WINTER STORM

Emergency Support Function 10: Hazardous Materials

**Cherokee County Fire-ES
Canton Fire Department
Woodstock Fire Rescue**



Functional Objectives:

- o Acceleration of preparedness and mitigation measures.
- o Increase readiness to respond.
- o Implement emergency protective and mitigation actions.
- o Initiate emergency response actions.

<input checked="" type="checkbox"/>	Tasks	Pre-Event	Response	Recovery
	Review Plans.	X		
	Complete Checklists & Test critical communications equipment.	X		
	Alert staff/volunteers of possible EOC activation.	X		
	Ensure that materials and equipment needed to support winter storm operations are obtained and ready for deployment.	X		
	Consider development of special staffing plans based on the latest situational awareness and/or forecasts and implement as needed.	X	X	X
	Consider deployment of staff 4x4 vehicles to field operations.	X	X	X
	Provide staffing to EOC when activated.	X	X	X
	Respond to calls for service and deliver services found within the department's core competencies for Hazardous Materials as assigned.	X	X	X
	Maintain high level of situational awareness.	X	X	X
	Participate in briefings.	X	X	X
	Encourage all staff/ volunteers to review their home emergency preparation plans, supplies, and family notification systems.	X		
	Activate mutual aid agreements as needed.	X	X	X
	Provide EOC leadership with information relative to Hazardous Materials operations for advanced planning.	X	X	X
	Demobilize as situation allows.		X	X
	Report all costs related to storm operations to the Emergency Operations Center Finance Section.			X
	Implement Demobilization Plan.			X
	Participate in After Action activities.			X
	Restock & Prepare for next activation.			X

G.2.j WINTER STORM

Emergency Support Function 11: Agriculture & Animal

**Cherokee County Extension Service
Cherokee County Animal Shelter
Cherokee County Marshal**



Functional Objectives:

- o Acceleration of preparedness and mitigation measures.
- o Increase readiness to respond.
- o Implement emergency protective and mitigation actions.
- o Initiate emergency response actions.

<input checked="" type="checkbox"/>	<i>Tasks</i>	Pre-Event	Response	Recovery
	Review Plans.	X		
	Complete Checklists & Test critical communications equipment.	X		
	Alert staff/volunteers of possible EOC activation.	X		
	Ensure that materials and equipment needed to support winter storm operations are obtained and ready for deployment.	X		
	Consider development of special staffing plans based on the latest situational awareness and/or forecasts and implement as needed.	X	X	X
	Develop plan for staffing animal shelter including transportation of employees/volunteers to maintain critical services.	X		
	Provide staffing to EOC when activated.	X	X	X
	Maintain high level of situational awareness.	X	X	X
	Participate in briefings.	X	X	X
	Encourage all staff/ volunteers to review their home emergency preparation plans, supplies, and family notification systems.	X		
	Extension Service shall provide information to the EOC Joint Information Center related to food safety within the home during power outages.	X	X	X
	Animal shelter shall provide the EOC Joint Information Center information related to pet care during winter storms that can be provided to the public.	X	X	X
	Demobilize as situation allows.		X	X
	Report all costs related to storm operations to the Emergency Operations Center Finance Section.			X
	Implement Demobilization Plan.			X
	Participate in After Action activities.			X
	Restock & Prepare for next activation.			X

G.2.k WINTER STORM

Emergency Support Function 12: Energy



Cherokee Sheriff's Office Division of Emergency Management

Functional Objectives:

- o Acceleration of preparedness and mitigation measures.
- o Increase readiness to respond.

<input checked="" type="checkbox"/>	<i>Tasks</i>	Pre-Event	Response	Recovery
	Alert CERT members of the need for possible staffing if EOC-ESF-12 is activated.	X		
	Review Plans.	X		
	Complete Checklists & Test critical communications equipment.	X		
	Consider development of special staffing plans based on the latest situational awareness and/or forecasts and implement as needed.	X		
	Contact utility companies to ensure communications systems are working and that the correct reporting procedure for each utility is coordinated.	X		
	Communicate requests for service with each utility company as needed.		X	X
	Maintain accurate log of actions taken, requests made and disposition of each request in WebEOC®		X	X
	Alert EOC leadership of any issues related to coordination of utility company response.		X	X
	Participate in After Action activities.			X

G.2.I WINTER STORM

Emergency Support Function 13: Law Enforcement

EOC-Emergency Service Branch

Cherokee Sheriff's Office
Ball Ground Police
Canton Police
Holly Springs Police
Nelson Police
Woodstock Police
Marshal's Office
School Police



Functional Objectives:

- o Acceleration of preparedness and mitigation measures.
- o Increase readiness to respond.
- o Implement emergency protective and mitigation actions.
- o Initiate emergency response actions.

<input checked="" type="checkbox"/>	Tasks	Pre-Event	Response	Recovery
	Attend briefings and other planning meetings related to the potential threat.	X		
	Coordinate with maintenance shop for deployment of snow tires & chains.	X		
	Encourage all employees to review their home emergency preparation plans, supplies, and family notification systems.	X		
	Ensure that materials and equipment needed to support winter storm operations are obtained and ready for deployment.	X		
	Consider development of special staffing plans based on the latest situational awareness and/or forecasts and implement as needed.	X	X	X
	Consider deployment of staff 4x4 vehicles to field operations for quick response units.	X	X	X
	Provide staffing to EOC when activated.	X	X	X
	Respond to calls for service and deliver services found within the department's core competencies.	X	X	X
	Consider taking reports by phone due to hazardous driving conditions.	X	X	X
	Sheriff's Office: review and implement internal plans for the adult detention center including testing of back up systems, transportation of staff and food service for staff and inmates.	X	X	X
	Activate mutual aid agreements as needed.	X	X	X
	Consider sleeping area for staff at Headquarters or other nearby facilities.	X	X	X
	Consider deployment of personnel to the E-911 Center to coordinate the movement of Law Enforcement resources.	X	X	X
	Establish single point resource ordering between field commands and the Emergency Operations Center if Activated.	X	X	X
	Report all costs related to storm operations to the Emergency Operations Center Finance Section.			X
	Implement Demobilization Plan.			X
	Participate in After Action activities.			X

G.2.m WINTER STORM

Emergency Support Function 14: Long-Term Recovery
EOC-Services Branch

Cherokee C.A.R.E.S
Cherokee Sheriff's Office Division of Emergency Management



Functional Objectives:

- o Acceleration of preparedness and mitigation measures.
- o Increase readiness to respond.
- o Implement emergency protective and mitigation actions.
- o Initiate emergency response actions.

<input checked="" type="checkbox"/>	<i>Tasks</i>	Pre-Event	Response	Recovery
	Attend briefings and other planning meetings related to the potential threat.	X		
	Contact all volunteer organizations active in recovery to ensure readiness for expected hazards.	X		
	Encourage all employees/volunteers to review their home emergency preparation plans, supplies, and family notification systems.	X		
	Ensure that materials and equipment needed to support winter storm operations are obtained and ready for deployment.	X		
	Consider development of special staffing plans based on the latest situational awareness and/or forecasts and implement as needed.	X	X	X
	Provide staffing to EOC when activated.	X	X	X
	Respond to calls for service and deliver services found within the local recovery plan.	X	X	X
	Establish single point resource ordering between long term recovery facilities and the Emergency Operations Center if activated.	X	X	X
	Report all costs related to storm operations to the Emergency Operations Center Finance Section.			X
	Implement Demobilization Plan.			X
	Participate in After Action activities.			X

G.2.n WINTER STORM
Property Management
EOC-Infrastructure Branch
Cherokee County Property Management
City Departments
School District

Functional Objectives:

- o Acceleration of preparedness and mitigation measures.
- o Increase readiness to respond.
- o Implement emergency protective and mitigation actions.
- o Initiate emergency response actions.

<input checked="" type="checkbox"/>	Tasks	Pre-Event	Response	Recovery
	Attend briefings and other planning meetings related to the potential threat.	X		
	Deploy ice melt, other supplies to assigned government facilities.	X		
	Encourage all employees to review their home emergency preparation plans, supplies, and family notification systems.	X		
	Ensure that materials and equipment needed to support winter storm operations are obtained and ready for deployment.	X		
	Consider development of special staffing plans based on the latest situational awareness and/or forecasts and implement as needed.	X	X	X
	Cherokee County Property Management shall coordinate with the Engineering Department to obtain 4x4 vehicles for use during the event.	X	X	X
	Provide staffing to EOC when activated.	X	X	X
	Assess the status of facilities for loss of power and heat, safety of ingress points, sidewalks, etc., and report findings to the EOC.	X	X	X
	Treat and/or remove snow, ice, and debris from side walks and entry points at assigned facilities.	X	X	X
	Establish single point resource ordering between field commands and the Emergency Operations Center if Activated.	X	X	X
	Report all costs related to storm operations to the Emergency Operations Center Finance Section.			X
	Implement Demobilization Plan.			X
	Participate in After Action activities.			X

G.2.o WINTER STORM

Emergency Support Function 15: Public Affairs

EOC-Command Staff

Cherokee Sheriff's Office

Cherokee Fire-ES

City Public Information Officers

School District

Functional Objectives:

- o Acceleration of preparedness and mitigation measures.
- o Increase readiness to respond.
- o Implement emergency protective and mitigation actions.
- o Initiate emergency response actions.

<input checked="" type="checkbox"/>	Tasks	Pre-Event	Response	Recovery
	Attend briefings and other planning meetings related to the potential threat.	X		
	Seek approval from on-scene incident commanders and/or EOC – IC for all press releases.	X	X	X
	Encourage all PIOs to review their home emergency preparation plans, supplies, and family notification systems.	X		
	Ensure that supplies needed to support winter storm operations are obtained and ready for deployment.	X		
	Coordinate with EOC Command Staff to develop special staffing plans for ESF 15 based on the latest situational awareness and/or forecasts and implement as needed.	X	X	X
	Provide staffing to EOC when activated.	X	X	X
	Report all costs related to storm operations to the Emergency Operations Center Finance Section.			X
	Implement Demobilization Plan.			X
	Participate in After Action activities.			X

G.2.p WINTER STORM

Fleet Maintenance

Cherokee County Fleet Maintenance

City Fleet Services

School District Fleet Services

Functional Objectives:

- Acceleration of preparedness and mitigation measures.
- Increase readiness to respond.
- Implement emergency protective and mitigation actions.
- Initiate emergency response actions.

<input checked="" type="checkbox"/>	<i>Tasks</i>	Pre-Event	Response	Recovery
	Attend briefings and other planning meetings related to the potential threat.	X		
	Coordinate with all agencies which have essential functions during winter storms to ensure fleet readiness.	X	X	X
	Encourage all employees to review their home emergency preparation plans, supplies, and family notification systems.	X		
	Ensure that materials and equipment needed to support winter storm operations are obtained and ready for deployment.	X		
	Consider development of special staffing plans based on the latest situational awareness and/or forecasts and implement as needed.	X	X	X
	Respond to requests for field repairs from agencies/departments with essential functions	X	X	X
	Report all costs related to storm operations to the Emergency Operations Center Finance Section.			X
	Implement Demobilization Plan.			X
	Participate in After Action activities.			X

G.2.q WINTER STORM

Senior Services

Cherokee County Senior Services

Functional Objectives:

- Acceleration of preparedness and mitigation measures.
- Increase readiness to respond.
- Implement emergency protective and mitigation actions.
- Initiate emergency response actions.

<input checked="" type="checkbox"/>	<i>Tasks</i>	Pre-Event	Response	Recovery
	Attend briefings and other planning meetings related to the potential threat.	X		
	Encourage all employees to review their home emergency preparation plans, supplies, and family notification systems.	X		
	Ensure that materials and equipment needed to support winter storm operations are obtained and ready for deployment.	X		
	Consider development of special staffing plans based on the latest situational awareness and/or forecasts and implement as needed.	X	X	X
	Consider contacting all clients and advising them of impending winter storm and provide preparedness information as needed.	X	X	X
	Provide staffing to EOC if needed.	X	X	X
	Consider providing extra rations for Meals on Wheels clients.	X		
	Assess facilities for treatment and/or removal of snow, ice and storm debris and advise EOC of needs.	X	X	X
	Report all costs related to storm operations to the Emergency Operations Center Finance Section.			X
	Implement Demobilization Plan.			X
	Participate in After Action activities.			X

H. Logistics Support & Resource (EMAP 4.6.2.5, 4.8.4.1, 4.8.4.2, 4.8.4.3)

1. Supplies & Equipment – Each agency/department with assignments within this plan are responsible for ensuring equipment readiness and adequate supplies to initiate winter storm operations. Any resources that require lead-time should be activated as soon as possible.
2. Equipment Maintenance – Each agency/department shall use normal procedures and vendors for maintenance and repairs of equipment during plan activation. In the event that the on-going situation prevents the use of existing facilities/vendors the agency/department shall notify the EOC immediately for assistance in locating the needed facility, or vender.
3. Single Point Ordering - Once the EOC is activated all departments/agencies will be notified that a single point ordering system through the EOC will be activated.

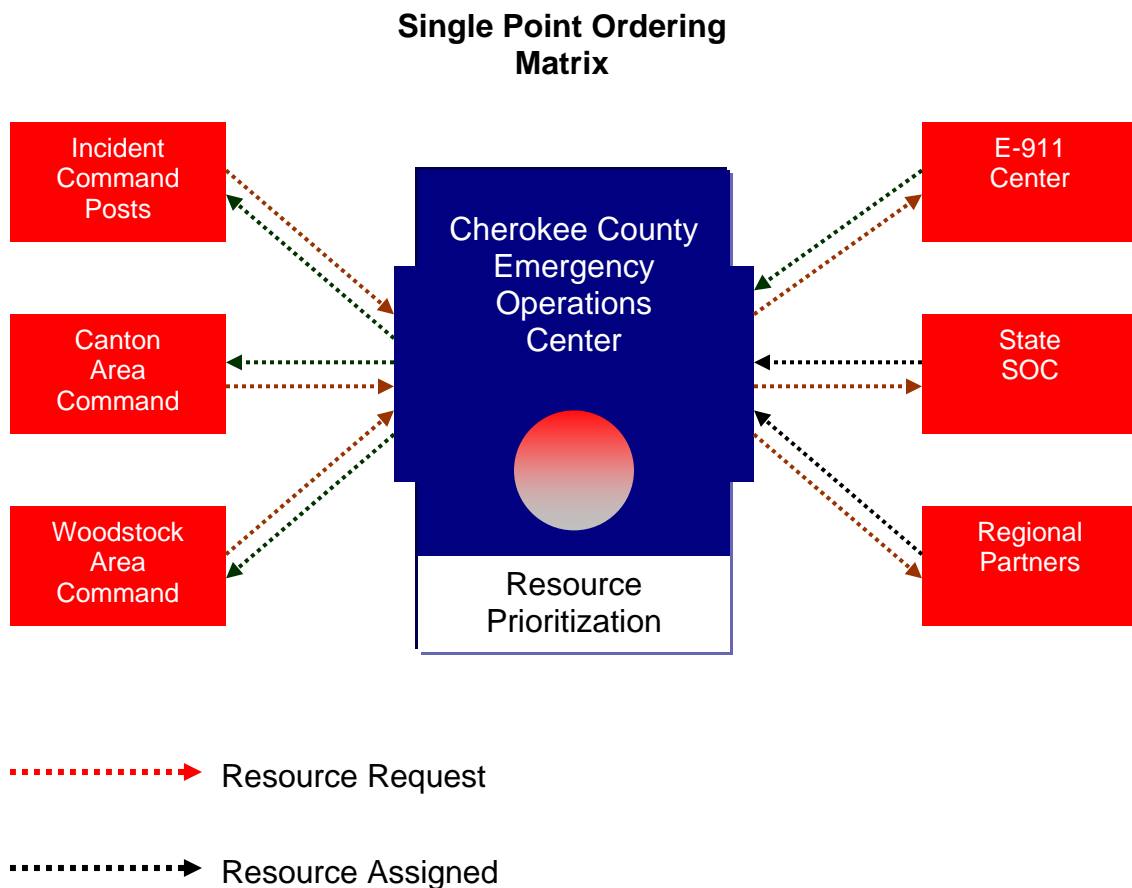


Figure H.1

4. Dispatching Resources (EMAP 4.8.4.1) – Resources required for the potential impacts of the storm can be pre-positioned prior to the onset of the hazard based on overall objectives and priorities by each agency/department as needed.
5. Documentation - All resource requests made to and filled by the Emergency Operations Center shall be logged into WebEOC®.
6. Deactivation (EMAP 4.8.4.3) – The deactivation of resources shall be made by Incident Commanders and agency/department representatives based on need and the expected progression of the overall situation.

I. Concept of Operations (EMAP 4.6.2.6)

1. Incident Management (EMAP 4.7.1) – All Winter Storm operations shall be managed following the doctrine defined by the National Incident Management System (NIMS)(Figure I.1).

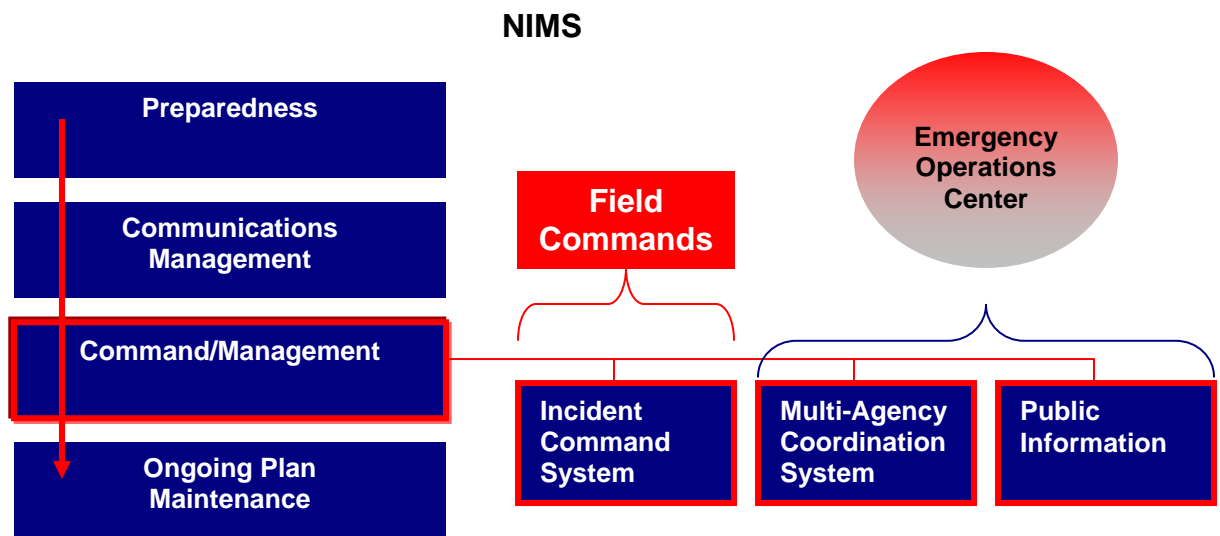


Figure I.1

2. Operational Priorities (EMAP 4.11.2) – All area operational priorities shall be based on life safety, incident stabilization, property protection, environmental protection, restoration of essential utilities and restoration of essential functions.
3. Plan Activation (EMAP 4.11.1) – parts or all of the Winter Storm Hazard Specific Plan can be activated by each department as needed. The Cherokee Sheriff’s Office Division of Emergency Management shall maintain responsibility for providing situation specific information to all stakeholders to ensure timely and adequate plan activation.

4. EOC Activation (EMAP 4.12.2) – The EOC will be activated following SOP 4-2 and remain open until it is determined that the need for multi-agency coordination or any other support functions are no longer needed.

a. Pre-Determined EOC Activation Levels:

EOC Activation Matrix
Pre-Determined Threat Levels/EOC Minimum Activation

Threat	Potential Local Impact Timeline	Activation Level	Positions Staffed
Winter Storm Watch	Within 24 to 48 Hours severe winter weather conditions could impact travel, infrastructure, and emergency services.	3 Monitoring	EOC-IC ESF-2 ESF-5
Winter Storm Watch	<24 Hours severe winter weather conditions could impact travel, infrastructure, and emergency services.	2 “LIGHT”	EOC-IC ESF-2 ESF-3 ESF-5
Winter Storm Warning Ice Storm Warning	Severe winter weather conditions are expected < 12 hours or are occurring with the potential to impact travel, infrastructure, and emergency services.	2 “Partial”	EOC-IC EOC-Ops Section Chief EOC- Planning Section ESF-2 ESF-3 ESF-4 ESF-5 ESF-7 ESF-11 ESF-12 ESF-15
Blizzard Watch	Within 24 to 48 Hours Blizzard conditions could impact local area.	2 “Partial”	EOC-IC EOC-Ops Section Chief EOC- Planning Section ESF-2 ESF-3 ESF-4 ESF-5 ESF-7 ESF-11 ESF-12 ESF-15
Blizzard Warning	Blizzard condition imminent or occurring.	1 “FULL”	All Positions

Table I.4.

5. Multi-Agency Coordination – The Cherokee County Emergency Operations Center shall be the facility where all components of the local Multi-Agency Coordination System (MACS) are located.
6. Damage Assessment (EMAP 4.11.4) – Severe winter weather impacts can produce damage to private property, government infrastructure and utility infrastructure. Damage assessment will begin as soon as safe following SOP 4-9 and reported accordingly to local and state officials.

**Damage Assessment Responsibilities
Winter Storm**

Area of Assessment	Assessment Responsibility
County Roads & Bridges (Includes Debris Estimation)	Cherokee County Engineering Department
City Roads & Bridges (Includes Debris Estimation)	City Streets Departments
County Facilities	County Property Management Department
City Facilities	City Staff
Private Property	Division of Emergency Management
Utilities	Utility Providers
School Facilities	School District
Public Safety Communications	E-911 Center

Table I.6

7. County/City Government Closings

- a. Cherokee County – The EOC will provide information to the County Manager and/or Commission Chairman relative to the winter storm situation. Based on that information the County Manager and/or Chairman will decide to make: no changes to county office schedules, delay opening or close county offices. This process will continue each day until the hazard has ceased to exist.
- b. City Governments – The EOC will provide information to each of the city governments relative to the on-going winter storm situation. Once the Emergency Operations Center is contacted by the official representative of each city concerning the status of city government offices, the information will be disseminated via all available communications methods.

c. Cherokee County Schools – The EOC will provide information to school system liaison relative to the on-going winter storm situation. **The Emergency Operations Center will make no recommendations related to the closing of schools.** Once the EOC is contacted by the school district liaison concerning the status of schools the official decision will be disseminated via all available EOC communications methods.

Government Closing Communication Matrix (EMAP 4.10.1)

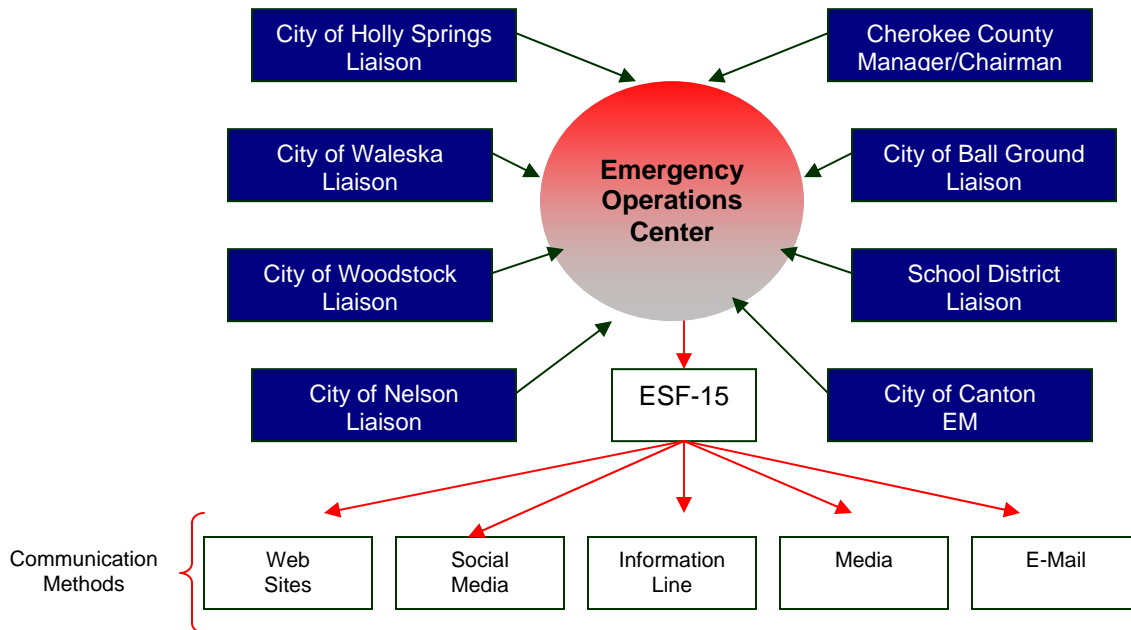


Figure: I.7 – Communications Matrix

8. Court System

In order to maintain continuity of operations across all county departments and agencies all Cherokee County Courts have agreed to follow the following procedure for closings due to severe winter weather.

Once the Cherokee County Commission Chairman or Cherokee County Manager decides to close or delay opening of county offices, all court systems will follow with identical closing or delayed schedule for the first day of the event. Thereafter, each court will determine their status for subsequent days.

The Clerk of Court shall act as the single point of contact between each individual court and the emergency operations center concerning the status

of each court on each subsequent day following the initial affected day. The Clerk of Court will email the status of each court to the Emergency Operations Center and that email will be used to transmit the status of each court by the Emergency Operations Center through all available methods.

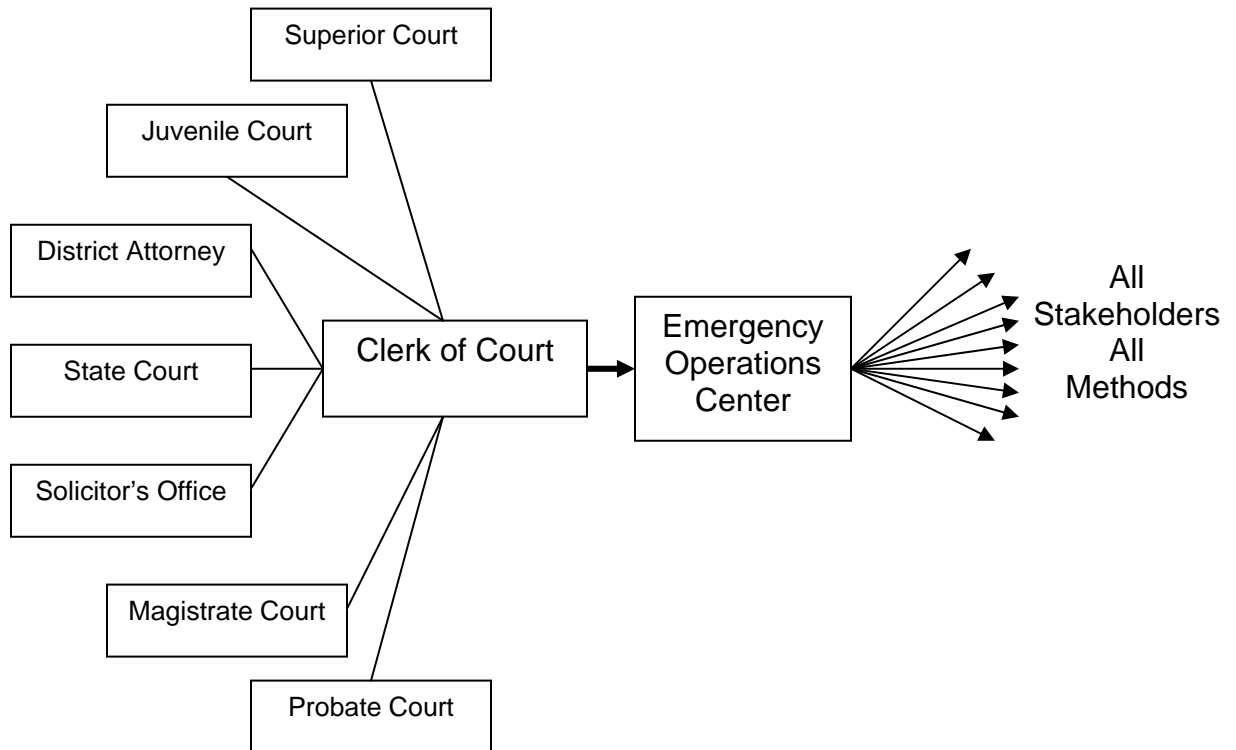


Figure: I.8

J. Crisis Communications

1. Executive Briefing (EMAP 4.10.1, 4.10.3) – The Division of Emergency Management shall issue executive briefings with all available information associated with the threat and potential impacts and included forecast times of arrival. The executive briefing shall also include potential duration of impacts, details associated with threat, and EOC activation potential

Target Audience: All Key Decision Makers, Agency/Department Heads, Elected Officials and personnel with ESF responsibilities.

Communication Methods: Email, Conference Call, PowerPoint, Video

2. Awareness Message (EMAP 4.10.1,4.10.5) – Issued by the Division of Emergency Management to provide information that does not meet the criteria of a watch/warning message, or full situation report. This may include closing information, special weather statements, or winter weather advisories.

Target Audience: All Internal & External Stakeholders

Communication Methods: Email, Conference Call, PowerPoint, Video, Social Media, Web Sites.

3. Situation Report (EMAP 4.10.1, 4.10.3, 4.10.5) – Provided to all stakeholders by the Cherokee Sheriff's Office Division of Emergency Management. Situation Reports are very detailed reports of all activities within a specified EOC operational period and may also include anticipated future actions, current situation and other critical information. Situation Reports are typically issued every 12 or 24 hours.

Target Audience: All Internal & External Stakeholders

Communication Methods: Email, Social Media, Web Sites.

4. Winter Weather Watch Messages (EMAP 4.10.1, 4.10.3, 4.10.5) immediately sent to all stakeholders when issued by the National Weather Service.

Target Audience: All Internal & External Stakeholders

Communication Methods: Email, Social Media, Web Sites.

5. Winter Weather Warning Messages (EMAP 4.10.1, 4.10.3, 4.10.5) immediately sent to all stakeholders when issued by the National Weather Service.

Target Audience: All Internal & External Stakeholders

Communication Methods: Email, Social Media, Web Sites.

K. Training (EMAP 4.13.1)

1. Annual Training – The Division of Emergency Management shall ensure that annual training is conducted on this plan.

L. Plan Maintenance ([EMAP 4.6.2.7](#))

The Cherokee Sheriff's Office Division of Emergency Management shall be responsible for the annual maintenance of this plan.

APPENDIX 1: Crisis Communication – Pre-Scripted Information Bulletins

- A. Executive Briefing**
- B. Awareness Message**
- C. Situation Report**

Executive Briefing- (DATE HERE) (EOC ACTIVATION # IF APPLICABLE)

CHEROKEE SHERIFF'S OFFICE DIVISION OF EMERGENCY MANAGEMENT
EMERGENCY OPERATIONS CENTER

(Date)

(Time)

SUMMARY

(Provide a general summary of the event or expected event).

DURATION

(Provide the time period that impacts are likely to begin and end)

POTENTIAL IMPACTS

(List all potential impacts associated with hazard)

DETAILS

(Provide any details associated with event)

EOC ACTIVATION POTENTIAL

LIKELIHOOD OF ("EOC LIGHT") ACTIVATION IS – (State: Very Low, Low, Moderate, or High)

LIKELIHOOD OF ("EOC PARTIAL ACTIVATION") - (State: Very Low, Low, Moderate, or High)

LIKELIHOOD OF ("EOC FULL ACTIVATION") - (State: Very Low, Low, Moderate, or High)

Awareness Message- (DATE HERE) (EOC ACTIVATION # IF APPLICABLE)

CHEROKEE SHERIFF'S OFFICE DIVISION OF EMERGENCY MANAGEMENT
EMERGENCY OPERATIONS CENTER

(Date)

(Time)

SUMMARY

(Provide a general summary of the event or expected event).

DURATION

(Provide the time period that impacts are likely to begin and end)

POTENTIAL IMPACTS

(List all potential impacts associated with hazard)

DETAILS

(Provide any details associated with event)

PROTECTIVE ACTIONS

(Add protective measures specific to threat)

EOC ACTIVATION POTENTIAL

LIKELIHOOD OF ("EOC LIGHT") ACTIVATION IS – (State: Very Low, Low, Moderate, or High)

LIKELIHOOD OF ("EOC PARTIAL ACTIVATION") - (State: Very Low, Low, Moderate, or High)

LIKELIHOOD OF ("EOC FULL ACTIVATION") - (State: Very Low, Low, Moderate, or High)

SITUATION REPORT # 00



Incident Name

Emergency Operations Center

Activation Level: 00

I. OPERATIONAL PERIOD

From: Date/Time To: Date/Time

II. CURRENT SITUATION

III. EXECUTIVE ORDERS

IV. CONSEQUENCES

V. ESF/FUNCTIONAL ACTIONS

(List all ESF & Functional Position Actions)

Appendix 2: Winter Weather Protective Actions

- Each year, dozens of Americans die due to exposure to cold. Add to that number, vehicle accidents and fatalities, fires due to dangerous use of heaters and other winter weather fatalities and you have a significant threat.
- Threats, such as hypothermia and frostbite, can lead to loss of fingers and toes or cause permanent kidney, pancreas and liver injury and even death. You must prepare properly to avoid these extreme dangers. You also need to know what to do if you see symptoms of these threats.
- A major winter storm can last for several days and be accompanied by high winds, freezing rain or sleet, heavy snowfall and cold temperatures.
- People can become trapped at home or in a car, without utilities or other assistance.
- Attempting to walk for help in a winter storm can be a deadly decision.
- The aftermath of a winter storm can have an impact on a community or region for days, weeks or even months.
- Extremely cold temperatures, heavy snow and coastal flooding can cause hazardous conditions and hidden problems.
- Keep ahead of the storm by listening to NOAA All Hazards Weather Radio.

At Home

- Primary concerns are loss of heat, power and telephone service and a shortage of supplies if storm conditions continue for more than a day.
- Have available flashlight with extra batteries, Battery powered radio, Extra food and water, extra medicine, first aid supplies, heating fuel, safe emergency heating source, smoke detector, carbon monoxide detector.

In Your Car

- Mobile phone, charger, batteries
- Blankets/sleeping bags
- Flashlight with extra batteries
- First-aid kit
- Knife
- High-calorie, non-perishable food
- Extra clothing to keep dry

- Large empty can to use as emergency toilet. Tissues and paper towels for sanitary purposes
- Small can and waterproof matches to melt snow for drinking water
- Sack of sand or cat litter for traction
- Shovel
- Windshield scraper and brush
- Tool kit
- Tow rope
- Battery booster cables
- Water container
- Compass and road maps.